

Bishops Mansions, SW6

£750,000

BRIK





Bishops Mansions

£750,000	1 Bed	840	78	E	£27,500
SHARE OF FREEHOLD	APARTMENT	SQ FT	SQ M	COUNCIL TAX	STAMP DUTY

An outstanding one double bedroom ground floor flat, located moments from Bishops Park and the river.

This impressive ground floor flat offers almost 850 sq ft of living space and is situated in a popular purpose built mansion building. The accommodation comprises a wide entrance hallway with plenty of built-in storage, a large bay fronted reception room, double bedroom, modern shower room with marble tiles, and a superb kitchen breakfast room with granite worktops and integrated appliances. Doors open onto a beautiful communal garden and access to a separate storage shed.

Bishops Mansions, on Bishops Park Road, is located opposite the public tennis courts (some of the best in the country) and Bishops Park, as well as the Thames riverside path, whilst also being close by to the amenities of Fulham Road with its eclectic mix of shops, restaurants and cafés. There is also a couple of very popular independent cafés just around the corner, as well as The River Cafe. The nearest tube station is Putney Bridge underground (District Line) which is 0.6 miles away. EPC rating — D

- ✓ 1 bedroom
- ✓ 1 Shower room
- ✓ Large reception room
- ✓ Kitchen breakfast room
- ✓ Communal garden
- ✓ Great condition
- ✓ Share of freehold
- ✓ Excellent location
- ✓ Approx. 840 sq. ft (78 sq m)
- ✓ Council tax band - E



Jessica Galletta

SALES ASSOCIATE
+ 8 YEARS EXPERIENCE

020 7384 6790

jess@brik.co.uk









FULHAM AREA GUIDE

Bishop’s Park

The ‘Bishop’s Park’ area is located on the south west border of Fulham, ideal for Tube links from Putney Bridge. The proximity of Bishops Park, Fulham Palace, the River and Putney Bridge tube go some way to offsetting the slightly out-of-the-way feel, but then many who buy here do so for that very reason. There’s a more laid back feeling in the air, and parking is easier than more central areas of Fulham.

Gardens here are generally much larger than the Fulham average, and the houses are big too (over 4,000 sq ft in some cases), making this area extremely popular with families. Prices have rocketed in recent years, especially on the southern streets, but you still get more for your money than in Parsons Green.

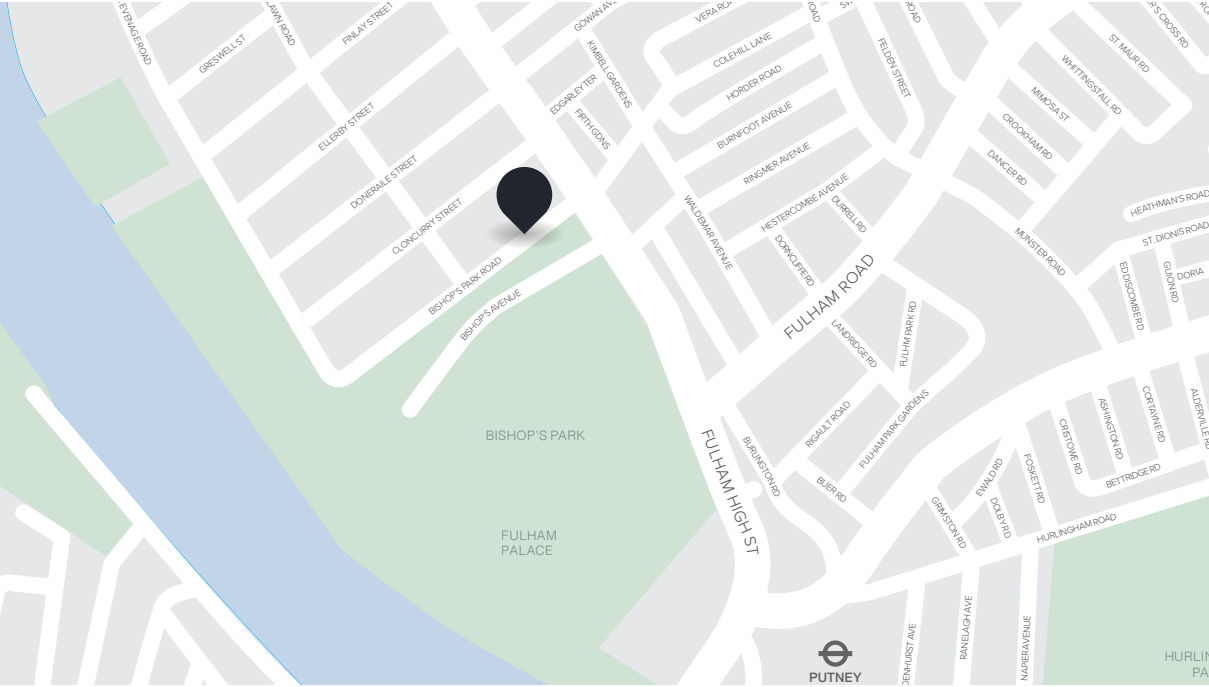
CLOSEST:

- 🚶 Putney Bridge (13 mins)
- 🚶 West Brompton (34 mins)
- 🚶 Bishops Park (1 mins)

KEY:

- Property location
- ‘Bishop’s Park’ area of Fulham

Read all our Fulham area guides here



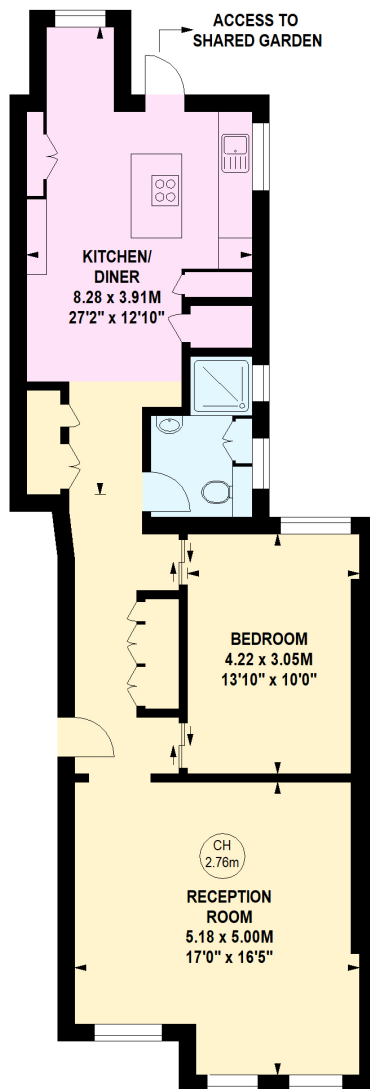
B R I K

840
SQ FT

78
SQ M

Key :
CH - Ceiling Height

ACCESS TO
SHARED GARDEN



Ground Floor

Important notice Brik give notice that: all text, photographs and plans on these brochure are for guidance only and are not necessarily comprehensive; any areas, measurements or distances given are approximate; these details do not constitute part of an offer or contract and must not be relied upon as statements or representations of fact; it should not be assumed that the property has all the necessary planning permissions and building regulations approvals; we are not authorised to give any representations or warranties in relation to this property whatsoever; potential purchasers must satisfy themselves as to the correctness of all details by inspection or otherwise. Brik, 77 Parsons Green Lane, Fulham, London SW6 4JA Tel: 020 7384 6790 Email: hello@brik.co.uk